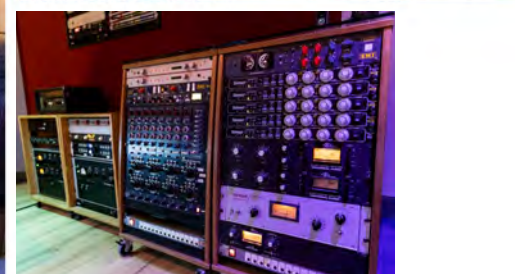
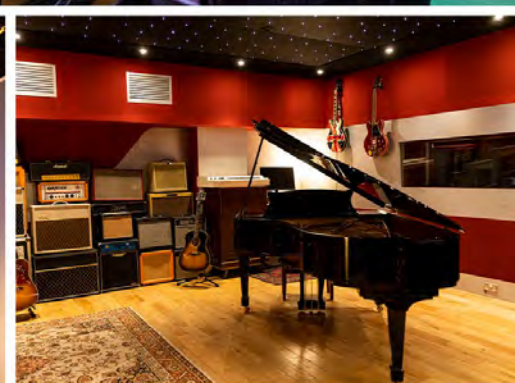
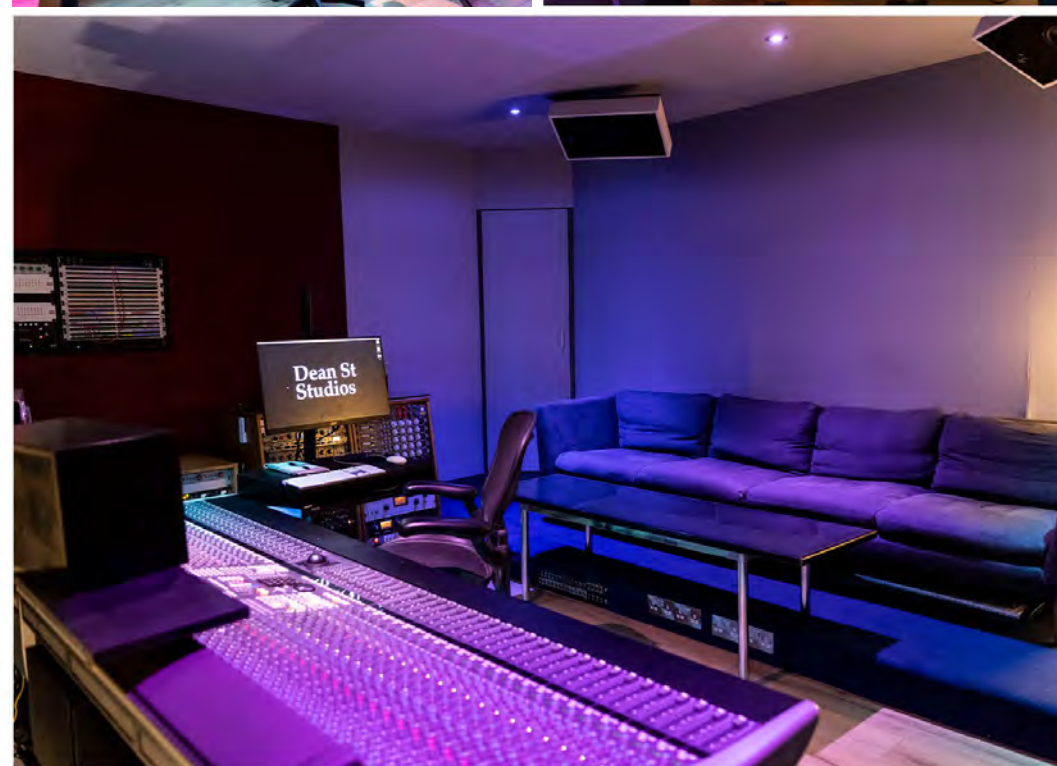
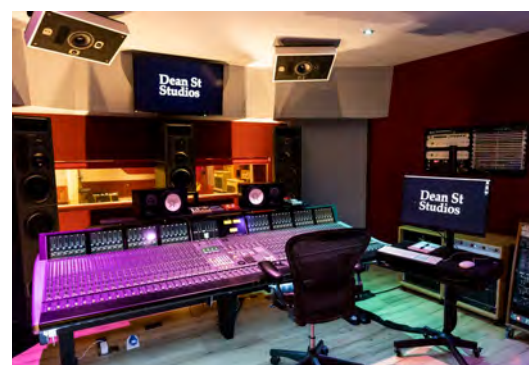


# Dean St. Studios



## THE FLAGSHIP Studio 1

When you step into our flagship Studio 1, you're entering a space which combines the best of cutting-edge recording technology with a vast array of vintage analogue equipment. While subtly modernised, the studio still maintains the same warm sound and laid-back ambience that Tony Visconti envisioned when

he planned the space back in 1976. Factor in the building's calming sanctuary from the rush of Soho life and the welcoming touch of our staff, and you'll discover that it's the perfect environment for your creativity to flourish.



Studio 1 is also a rarity in central London. Not only is it one of the few studios to have a top range Atmos for Music set-up that is directly accessible from a spacious live room (measuring 650 square foot / 60 square metres), but it's also one of the last commercial large-format recording studios that remain in the area.

Our enviable range of equipment provides that special something regardless of your approach to recording. Running alongside our 48 channels of pristine and modern SSL Duality preamps, we have a wealth of

plug-ins and 28 channels of characterful outboard preamp – including 8 Industry-standard Neve 1073s, and a rare 8-channel prototype Shadow Hills preamp. Everyone who visits our studio is irresistibly drawn to our beautiful Steinway classic grand piano, while our instruments and amps include items that have been previously owned by influential musicians stretching from George Harrison and Alvin Lee to Oasis.

Please look at our website [www.deanst.com](http://www.deanst.com) for full equipment list

# ATMOS

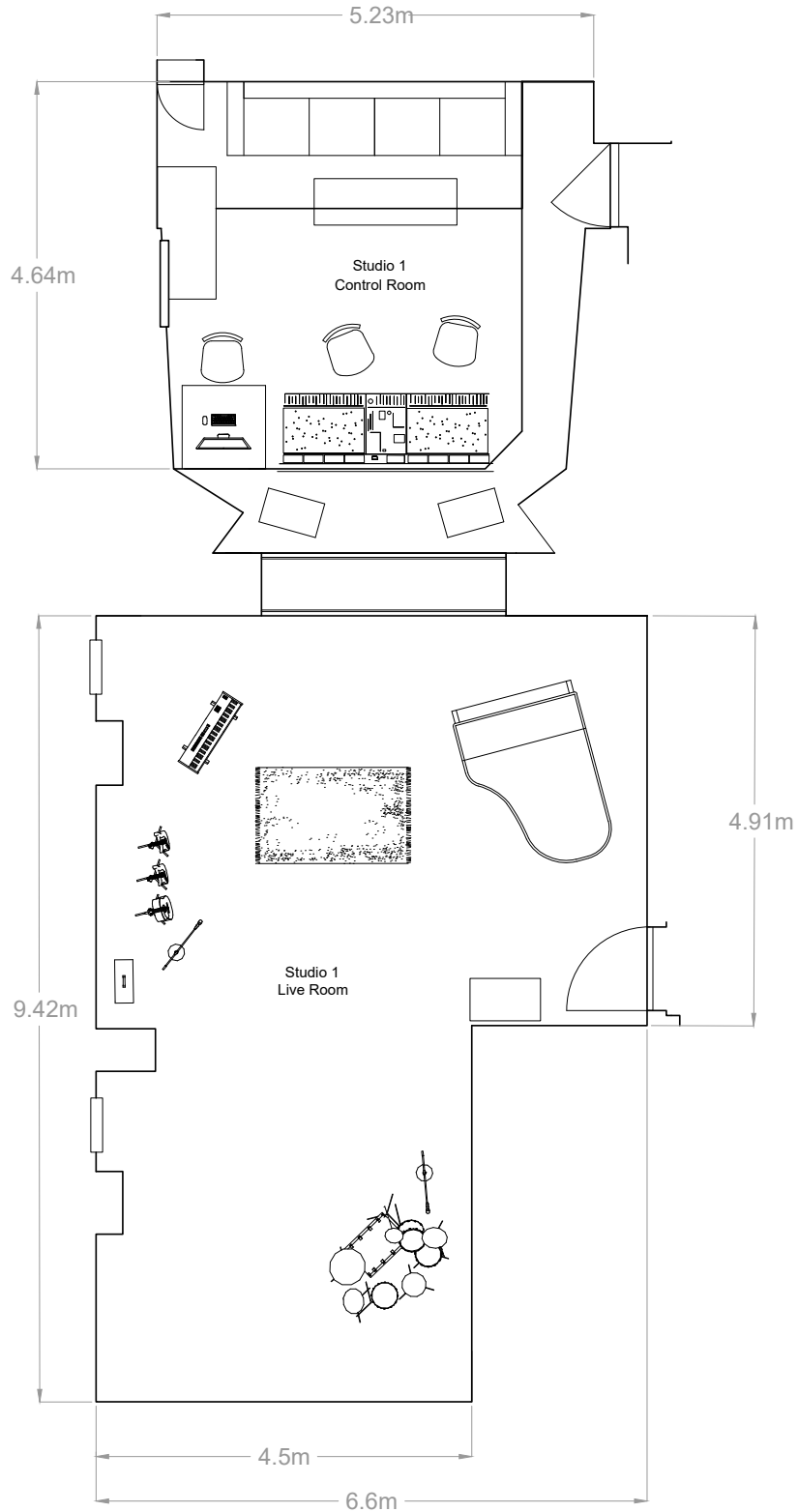
An early adopter of Dolby Atmos for Music, Dean Street was the second independent studio in the UK to acquire an Atmos setup – and remains one of the only studios worldwide with a live room attached directly to an immersive audio system, offering unparalleled future possibilities for direct-to-Atmos recording. With our two rooms based on an expanded PMC 9.1.4 layout, we believe our monitoring setup to be one of the most consistent and fulfilling listening experiences on offer in London– and have a wealth of previous clients to support it. Across genres - from Rock with the Foo Fighters, Rolling Stones, and Wargasm; to cutting edge Pop with Holly Humberstone, Maisie Peters, and Girl In Red - mixes done at Dean Street have consistently held up to the highest of standards.

Holding over two years of experience in Atmos, our team has seen the format evolve and change, and are uniquely positioned to provide expert guidance at every



step of the process – from stemming to premix, mixing, and distribution. Whether it be relying on our talented engineers to deliver a commercial and competitive mix for your project, or dry-hiring and utilising our wealth of in-house knowledge, Atmos at Dean St is an experience tailored to you and your needs.

# STUDIO 1 Floorplan



# Dean St. Studios

## STUDIO 1

# Equipment Listing

### Recording

SSL Duality 48 channel  
SSL XLogic Alpha-link 48 I/O Converter  
Crane Song HEDD 192  
Avid Pro Tools MTRX  
Pro Tools Ultimate  
2020.05.0  
Mac Pro (Late 2013-  
Running 10.14.6)  
3.7 GHz Quad-Core  
64GB RAM  
2x Avid HDX Card  
Studer A80 2" 16 Track Multi Track  
Hear Back Headphone System  
Full Array of HD + Native Plug-ins

### Dynamics / FX

Altec 1591A  
EMI TG1 Stereo Comp/Lim  
4 x EL Distressor EI8X (with brit mod)  
1 x EL Distressor EI8  
2 x UA 1176 Blackface  
UA LA-2A  
UA LA-3  
C2 Anamod AM670  
SPL Transient Designer  
Bricasti M7 Reverb  
(x2) +Controller  
DBX 266XL

### Monitoring

Stereo  
L/R PMC IB2S XBD-A mk1  
Yamaha NS10 (Crown XLS402 Amp)  
DT100 + DT150+ DT770 Pro Headphones  
AKG K182 Headphones

Dolby Atmos  
L/R PMC IB2S XBD-A mk1  
C IB2S-A-C mk2  
LFE PMC sub2  
Surrounds and Heights: PMC Wafer2  
Wafer Amps: Linea Research 88C3  
DAD MOM monitor operating module  
Focusrite RedNet AM2 Monitoring Unit

### Mic Pres / EQs

8 x Neve 1073  
8 x Shadow Hills GAMA  
EMI TG2 Dual Mic Pre  
Wunder Audio PA Four  
  
Joe Meek VC6Q  
Clariphonic Parallel Equalizer  
  
48 SSL Duality Channel Strips  
(+48 SSL Duality Mic Pres)



# MICROPHONES

## Condensers

WunderAudio U47 (valve)  
Lucas CS-1 (C12 copy)  
Peluso u47 (valve)  
Neumann U87 AI (x4)  
Neumann U87 p48 (valve)  
Neumann u47 Fet i  
Neumann KM84  
Josephson E22S  
Josephson C42 (x2)  
Gefell M300 (x2)  
Joe Meek JM57  
Sontronics STC-1S  
(x2) AKG C535  
AKG 414  
Shure Beta 87a (x2)  
DPA K4  
PZM

## Dynamics

Sennheiser 421 (x5)  
Sennheiser E840  
(x4)  
AKG D112 (x2)  
Electrovoice RE20  
Shure SM7b (x2)  
Shure SM57 (x4)  
Shure SM58 (x2)  
Shure Beta 57a (x2)  
Shure Sm56 (x3)  
Shure 520DX  
Yamaha Subkick  
Placid Audio  
Copperphone  
JSH GM55

## Ribbons

Coles 4038 (x2)  
Royer R121  
Royer SF-24  
Crowley & Tripp El Diablo



## AMPLIFICATION

### Guitar Amps

Fender Blues Junior x3  
Fender Bassman Tweed (1997)  
Gibson Super Goldtone x2  
Line 6V 15  
Marshall JCM 800 Head  
Marshall JMP Combo  
Marshall Woodstock 1960 4x12 Cab  
Marshall Classic 5  
Orange AD50  
Orange AD30  
Orange OTR  
Orange Tiny Terror  
2 x Orange PPC 4x12  
Vox AC30  
Vox AC15  
Vox VT15  
Soundcity 20C

### Bass Amps

Ampeg B15 Portaflex Bass Combo (1970)  
Ashdown Head Max 300  
Ashdown ABM C115-500 Combo  
  
Large range of effects pedals also available

## INSTRUMENTATION

### Electric Guitars

Gibson Firebird VII  
Gibson SG  
Gibson ES 235  
Gretsch Electromatic  
Fender Telecaster Thinline  
Fender Telecaster FSR Custom  
Fender Jaguar Johnny Marr Custom  
Rickenbacker 360 (12string)  
Epiphone Supernova  
Epiphone Sheraton  
Yamaha Pacifica  
Danelectro Baritone

### Acoustic Guitars

Gibson J-185 (12string)  
Gibson J200  
Gibson J45  
Gibson Hummingbird  
Goldtone Resonator Guitar  
Epiphone Texan (Nashville)

### Bass

Rickenbacker 4001  
Fender Mustang (short scale)  
Squire Precision



## Keys

Steinway Model B Classic Grand Piano  
Mellotron M4000 B-Squire Tak Piano  
Harmonium (Full size)  
Wurlitzer 200  
Micro Moog  
Clavia Nord Lead  
Micro Korg Mk1  
Roli Seabord  
Rise  
Leslie 122  
Speaker Cabinet

## Drums

Premier Maple Kit

Snares:

Craviotto Maple  
Ludwig Black Beauty  
Pearl Brass  
Sensitone  
Wood Ludwig  
Chrome

Cymbals:

Zildjan  
Paiste  
Sabian

Various Percussion

## Miscellaneous

RCF ART310a PA Speakers  
(x2) Peavey 14USB live-mixer  
Radial JD7  
Little Labs Phase Alignment Tool  
Midiman USB Midi-  
interface  
32" TV Screen  
27" Computer Monitor  
MTR HP6  
headphone amp  
Korg Rack Tuner  
Focusrite 2i2





# PLUGINS

AIR Plugin Bundle  
Avid Pro Plugin Bundle  
Altiverb 7 Reverb  
Antares Autotune Live  
Celemony Melodyne Assistant 4  
Dolby Atmos Production  
Eiosis AirEA Premium  
Fabfilter Complete  
Izotope Vinyl  
Kilohearts Nundle  
Massey Bundle  
Moogerfooger Bundle  
Native Instruments Kontakt 5  
Native Instruments Reaktor 6  
NUGEN Audio Halo Upmix and Downmix  
Plugin Alliance  
Soundtoys Complete  
Slate Everything Bundle  
Trigger 2  
Valhalla Room  
Valhalla Plate  
Valhalla Vintage Verb  
Valhalla RegEcho  
Valhalla SpaceModulator  
Vocalign Pro  
Waves 10 Gold Bundle  
UVI Falcon

---

